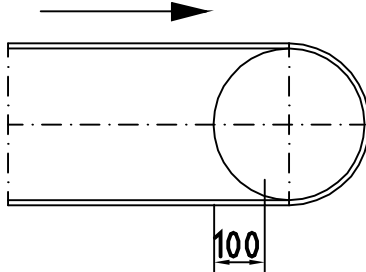


Installation Master Cleaner

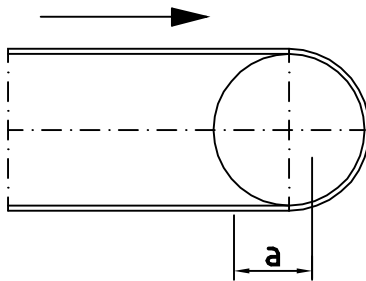
1.



Place the scraper

The scraper plate segment is placed in position 100 mm after the belt has left the discharge pulley.

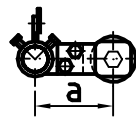
2.



Place the brackets

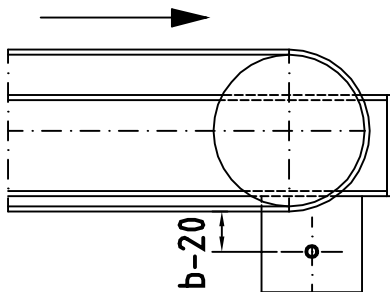
Please measure the distance from the middle of the pick-up of the scraper plate segment up to the middle of the bracket. - according to picture "a" -

Then please mark the point in direction



to the discharge pulley in order to fit the mounting plates.

3.

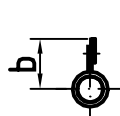


Attach the retaining plates

The marked position is in the same time the middle of the bore in the retaining plate.

The bore of the retaining plate is nested as follows:

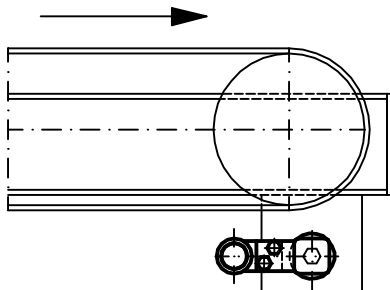
The measure is realized from the lower flange



of the scraper plate segment to the middle of the tube ("b") reduced by 20 mm.

In this position should be the middle of the bore.

4.



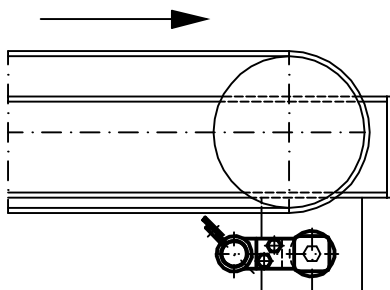
Pre-mount of the side brackets:

The brackets are pre-mounted.

ATTENTION! Right and left bracket.

The right bracket is fitted on the right and the left bracket on the left side of the running direction of the belt.

5

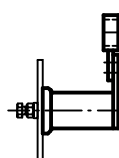


Insert of the scraper plate:

The support tube is inserted into the bracket if necessary shorten the support tube.

In this connexion the scraper plate

indicates away from the belt.

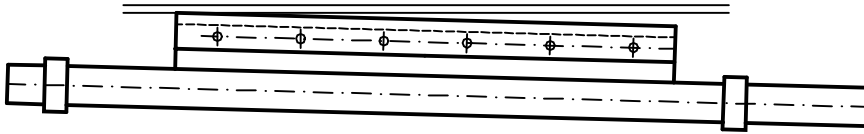


The brackets should be parallel to the belt.

The retaining screws are pivoted up to the stop and fastened by means of lock nut secured and/or

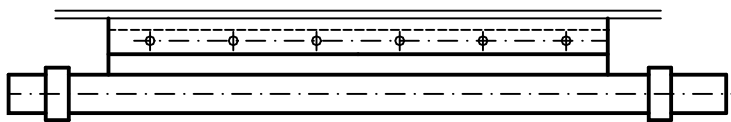
6.

Wrong



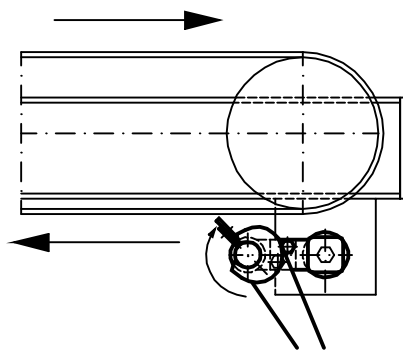
7.

Correct



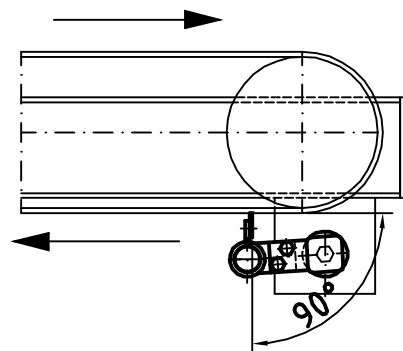
Mount of the scraper steel plate:
The scraper plate is aligned without
pressure above the belt
- not in 90° angle - .

8.



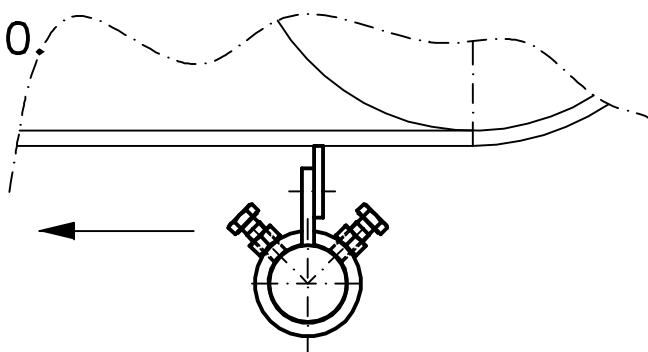
Employ of the scraper plate:
With use of a spanner the scraper
steel plate is mounted at the belt.
In this connexion the bracket
pressurize automatically.

9.



The scraper plate must be in 90° position to the belt.

10.



Fasten of the support tube.
Please tighten the set screws
at the bracket so that a torsion
of the tube is not possible.